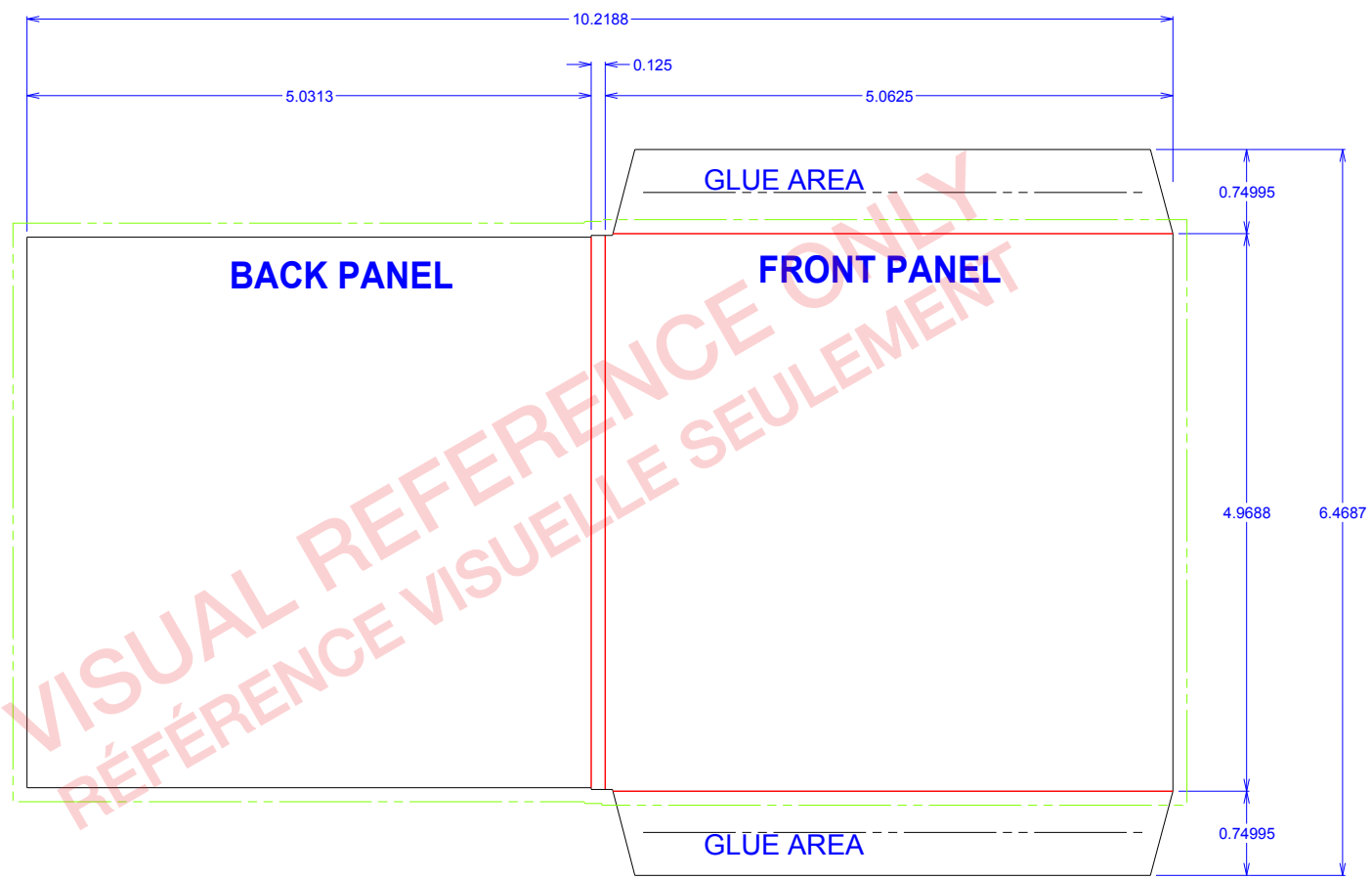


**\*\* MANUAL \*\***  
**\*\* GLUING \*\***



GRAIN DIRECTION

REFERENCE:	5" CD MINI JACKET 1/8" LP SPINE	MATERIAL:	I-SBS-15	NUMBER OF PANELS:	2
STYLE:	CD Custom mini jacket	OPEN BLANK:	6.4688 x 10.2188	NUMBER OF TRAY:	
SIZE:	4.96875 x 0.125 x 5.0625	RULE LENGTH:	61.415	TRAY POSITION:	
		DATE:	06/11/2018	NUMBER OF POCKET:	1
		DRAWN BY:	G.F.	STYLE OF POCKET:	CLOSE END